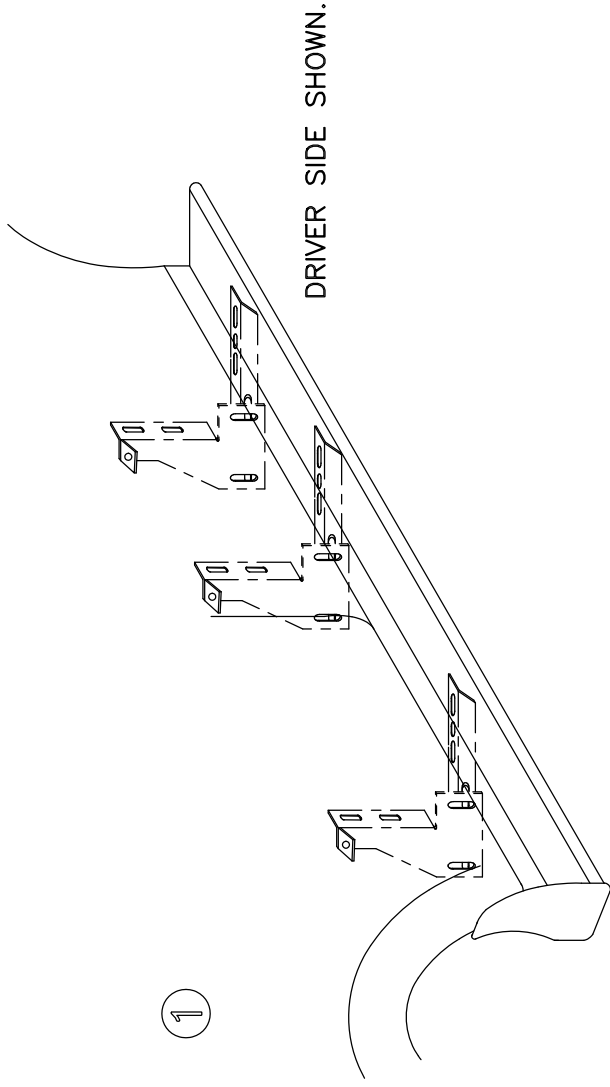


# 1992-CURRENT FORD VAN

IN461

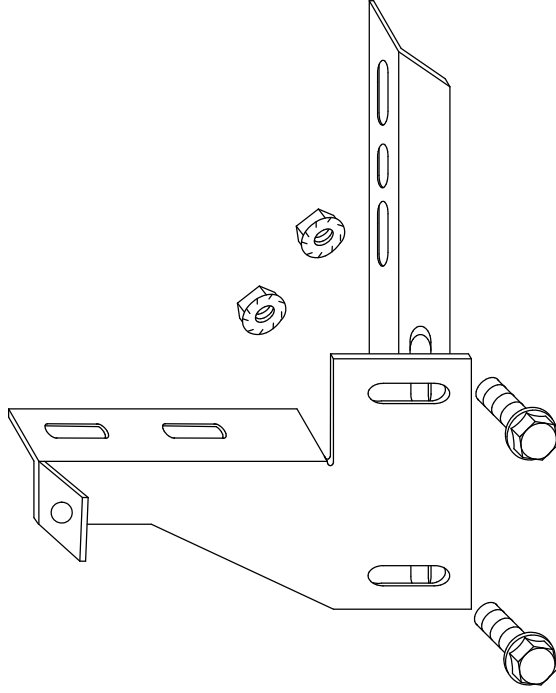
5/16" DRILL \* 1/2" HEX SOCKET \* 1/2" WRENCH \* 5/16" NUT DRIVER \* 5/16" NUT DRIVER \* 3/8" NUT DRIVER  
TOOLS REQUIRED:



MEASURE FROM FRONT WHEEL WELL TO BRACKET LOCATIONS. MARK THIS DIMENSION ON THE PINCH WELD (DRIVERS SIDE SHOWN)

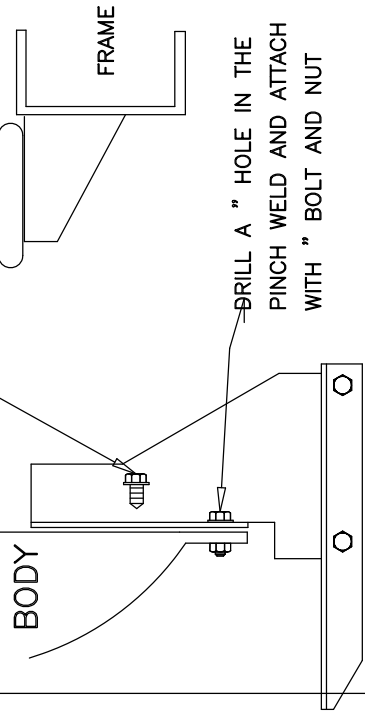
BRACKET LOCATION DRIVER/PASS SIDE: 38" 56" AND 76"

2  
BRACKET ASSEMBLY ASSEMBLY WITH 5/16" BOLTS



3

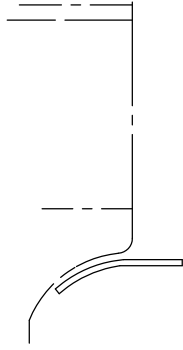
USE ONE SELF DRILLING SCREW INTO THE BODY



MOUNT AT LOCATIONS SHOWN AT 1

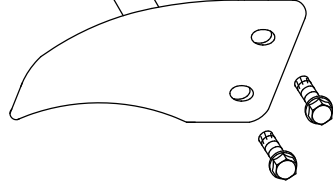
4

BEND STONE GUARD BY HAND AND KNEE TO FIT THE WHEEL WELL BEFORE INSTALLING TO RUNNING BOARD



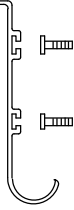
5

FASTEN FRONT STONE GUARD TO BOARDS WITH 3/8" SELF TAPPING BOLT. BEND STONE GUARD BY HAND AND KNEE TO FIT THE WHEEL WELL



6

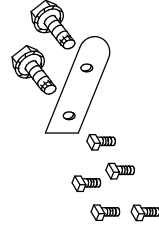
SLIDE ONE 1/4"x5/8" SQUARE HEAD SCREW FOR EACH BRACKET INTO TRACK.



ON PASSENGER SIDE USE THE INCLUDED STONE GUARD AND NOT AN END CAP.

7

INSTALL END CAP TO BOARD WITH 3/8" SELF TAPPING BOLT



8

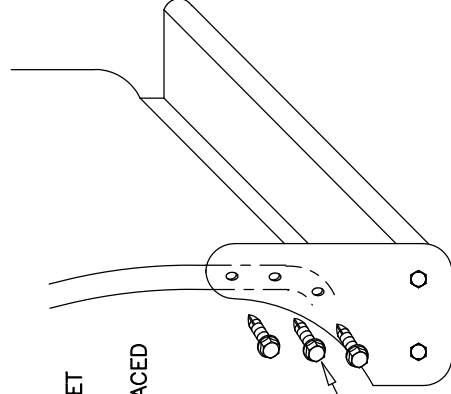
HOLD BOARD IN PLACE, WITH THE REAR RESTING ON THE BACK BRACKET

%%UNOTE:

BE SURE THAT 1/4" BOLTS ARE PLACED INTO THE BRACKET STEP SUPPORT

9

SCREW THROUGH STONE GUARD INTO FENDERWELL LIP USING #14 BY 3/4 SELF DRILLING SCREWS, MAKE SURE YOU DRILL INTO METAL

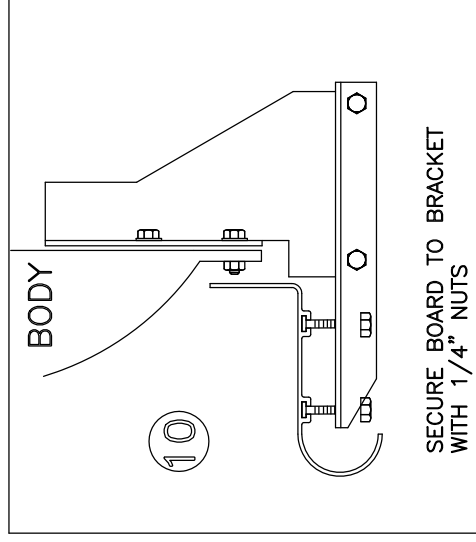


3 PLACES AT EACH STONE GUARD

11

WITH BOARD LEVEL TIGHTEN ALL LOOSE BOLTS

10



SECURE BOARD TO BRACKET WITH 1/4" NUTS

12

REPEAT FOR OTHER SIDE