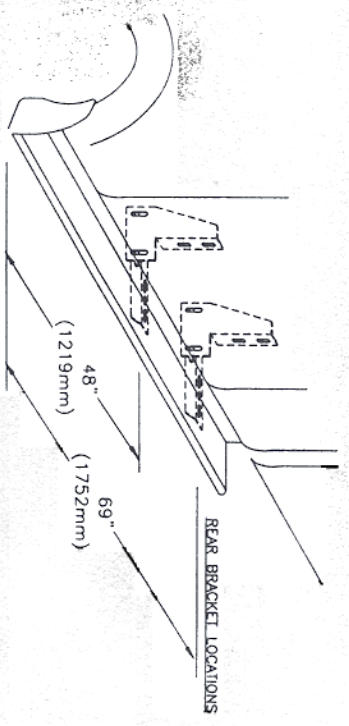


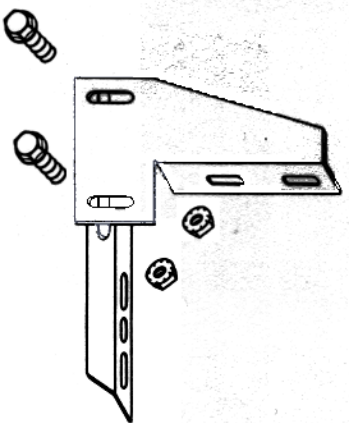
INSTALLATION PARTS LIST:	QTY.	DESCRIPTION	QTY.	DESCRIPTION
1	1	RUNNING BOARD 1 DRIVER & 1 PASSENGER	2	HORIZONTAL BRACKET, SUPPORT, 3124F
2	2	STONE GUARD 2 LEFT & 2 RIGHT	20	5/16" CLIP NUT
3	20	5/16" x 3/4" BOLT	18	5/16-18 HEX NUT
4	18	5/16-18 HEX NUT	4	FLAT BRACKET, FL11
5	8	#14x3/4" TEK SCREW	1	END CAP 1 LEFT & 1 RIGHT
6	8	1/4x5/8" SQUARE HEAD SCREW		
7	8	1/4-20 HEX NUT		

**TOOLS REQUIRED:** 5/16" DRILL • 1/2" HEX SOCKET • 1/2" WRENCH • 5/16" NUT DRIVER • 3/8" NUT DRIVER

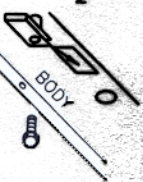


① (DRIVERS SIDE SHOWN)  
MEASURE FROM FRONT WHEEL WELL TO BRACKET LOCATION  
MARK THIS DIMENSION ON THE FRICH WELD

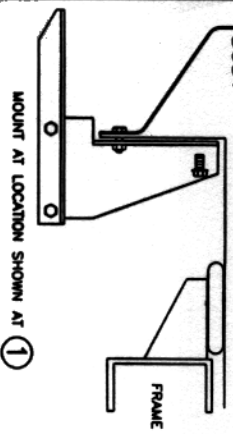
② BRACKET ASSEMBLY  
ASSEMBLY WITH 5/16" BOLTS



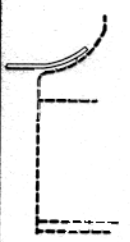
SLIDE NUT CLIP INTO BODY  
HOLES AT BRACKET LOCATION  
AT 48"



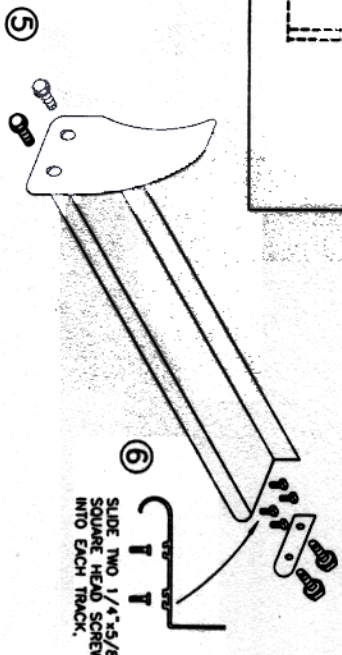
③ BRACKET ASSEMBLY MOUNT TO BODY #44"  
ASSEMBLY WITH 5/16" BOLTS AND  
NUT CLIP AND 5/16" BOLT  
BRACKET ASSEMBLY MOUNT TO BODY #69"  
ASSEMBLY WITH 5/16" BOLTS AND  
#14 SELF DRILLING SCREW



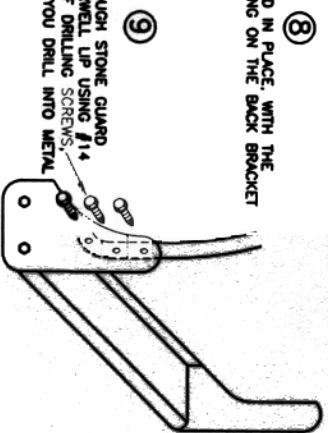
④ BEND STONE GUARD BY HAND AND  
KNEE TO FIT THE WHEEL WELL  
BEFORE INSTALLING TO RUNNING BOARD



FASTEN FRONT STONE GUARD  
TO BOARDS WITH 3/8" SELF  
TAPPING BOLT. BEND STONE  
GUARD BY HAND AND KNEE  
TO FIT THE WHEEL WELL



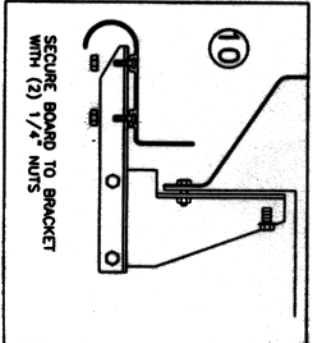
⑧ HOLD BOARD IN PLACE WITH THE  
REAR RESTING ON THE BACK BRACKET



3 PLACES AT EACH STONE GUARD

SCREW THROUGH STONE GUARD  
INTO FENDERWELL UP USING #14  
BY 3/4" SELF DRILLING SCREWS.  
MAKE SURE YOU DRILL INTO METAL

NOTE: BE SURE THAT 1/4" BOLTS ARE PLACED  
INTO THE BRACKET STEP SUPPORT



⑪ WITH BOARD LABEL TIGHTEN  
ALL LOOSE BOLTS

⑫ REPEAT FOR OTHER SIDE